

How to Stock UOM Everyday \$1.25

Unit of Measure **Everyday (\$1.25)** consumable product shelves have a **dark green shelf strip** with UOM shelf labels.

Everyday (\$1.25) consumable products, like candy, also require UOM labels.



- 1 **Find** the UOM label on the box or case the product came in.



- 2 **Remove** the label and place it inside the shelf strip holder.



- 3 **Place** product on shelf.

The shelf label must be **left aligned** to the product.

If product is moved to new location or flexed, the label must follow the product to the new location and be left aligned to the product.



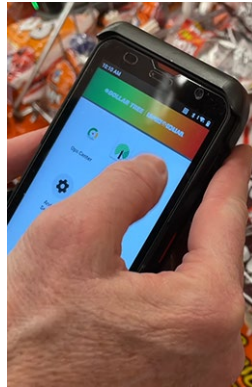
How to Stock UOM Everyday \$1.25

If a shelf or peg UOM label is missing or incorrect, you will need to print a new label.



1 Tap BUILD BATCH.

2 Scan the product's bar code.



3 Label will print.
Select the pencil icon to adjust quantity, select trashcan icon to delete from batch.

4 Tear UOM label from printer.

5 Place new UOM label on shelf or peg.



The shelf label must be **left aligned** to the product.

If product is moved to new location or flexed, the label must follow the product to the new location and be left aligned to the product.